
L&D – FOOD SAFETY AND HYGIENE

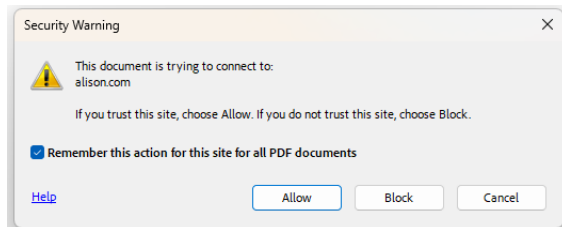
It's Here!



Logging into Alison

- If you've already created your Alison account, simply click on the below link
<https://alison.com/topic/learn/132097/food-safety-and-hygiene-learning-outcomes>

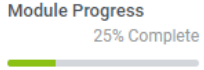
- If you are prompted with the below message, click “Allow”. This will open up the training module in your internet browser



- If you're directed to log into the Alison portal, use your previously created details (Same e-mail address as how you log into iiuk.org)
- If you haven't created your Alison account, refer to the “Alison Portal - How To Guide”



Notes about Alison Modules

- Once you start the module, you will see your progress in the top right corner of the webpage The image shows a progress indicator with the text 'Module Progress' above a horizontal bar. The bar is 25% filled with green, and the text '25% Complete' is positioned below the bar.
- Many modules will have a simple assessment at the end of the module to test understanding of the content
- Completion of each module: you can take the module at your own pace.
 - Start the module at any point
 - Pause when you need to (keep the webpage open)
 - Stop the module when you need to (minimise the webpage)
 - Complete the module when you are ready to do so (go back into the webpage, or re-click on the link from the first page)
- Upon successful completion of the module (and assessment if required), you will be presented with a certificate of completion



Alison Options

- View your current module status:

- i. Click on your profile in the top right-hand corner of the webpage



- ii. Click on “Your Dashboard”



Your Dashboard

- Continue pending module

Continue Learning



- Claiming a certificate for a completed module:

- i. Click on your profile in the top right-hand corner of the webpage



- ii. Click on the respective module

